

Big M Fat Bike Trails

Trail Descriptions

Little Loop

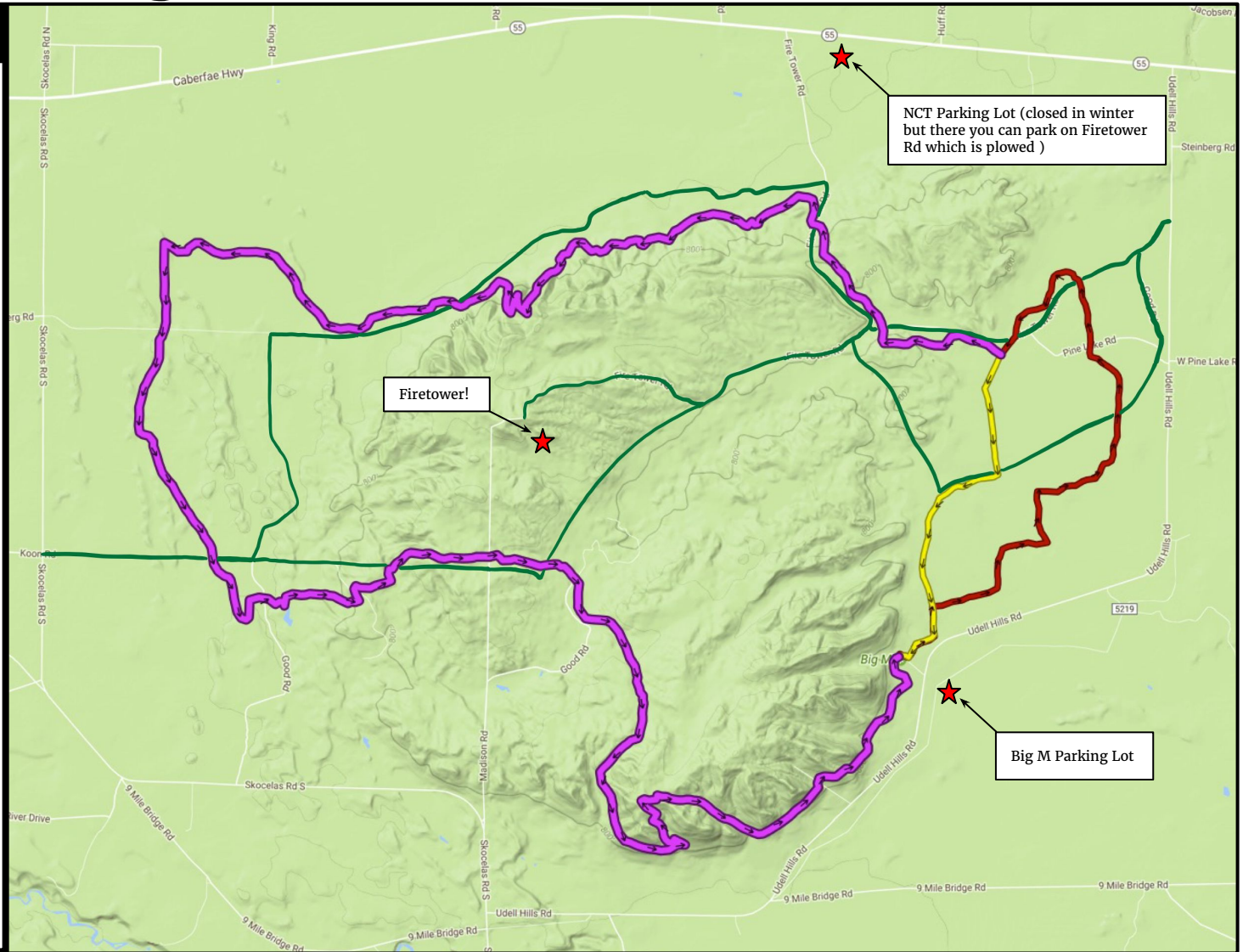
This section of trail is groomed approximately 30" wide and the trail is fairly flat. From the Big M parking lot it is just under 6 miles to do the loop and return to the parking lot.

Outer Loop

This section of trail is groomed approximately 20" wide making it more challenging. The route is hilly and remote adding to the difficulty. Plan accordingly. Using the red trail to complete the full outer loop is approximately 17 miles.

Groomed Snowmobile Trails

The groomed snowmobile trails offer options to add on miles, take shortcuts or get back to the parking areas more easily. Always yield to snowmobiles and make yourself visible by wearing bright colors and using blinking lights.



Don't be a jerk!

- **Do not ride on the groomed ski trails!**
- **Do not walk on the groomed fat bike trail** if you cannot ride a section. Walk in (or create) a boot track next to the groomed trail so you don't screw up the trail for everyone else.